

Syncron®

by ALNIC

COMPOSITION



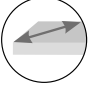
Particle board (PB) covered with decorative paper on both sides.

RECOMMENDED APPLICATIONS

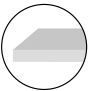
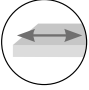
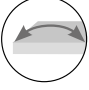
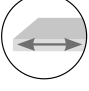



Furniture, cabinetry and decorative components.

CORE FEATURES

Dimensional Tolerances








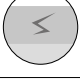


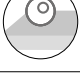

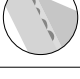

Property	Tolerance	Standard
 Length & width	± 5 mm	EN 324-1
 Thickness	± 0.3 mm	EN 324-1
 Square	± 2 mm/m	EN 324-2

Physio-mechanical Properties

Property	Thickness (mm)			Standard
	10-12	16-18	19-25	
 Density (Kg/m³)	710 ± 30	670 ± 30	650 ± 30	EN 323
 Traction Resistance (N/mm²) - min.	0.40	0.35	0.30	EN 319
 Warp Resistance (N/mm²) - min.	11	11	10	EN 310
 Elasticity (N/mm²) - min.	1800	1600	1500	EN 310
 Residual Humidity (%) - range		5 - 13		EN 322
 Emissions Classification, Formaldehyde Standard (Certificates upon request)		E1 (E0.5 – CARB2 – TSCA)		EN 13986
 Fire Rating		D-s2, d0		EN 13501-1

FINISH CHARACTERISTICS

Physio-mechanical Properties

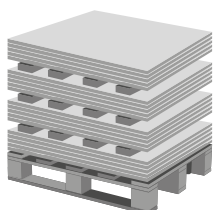
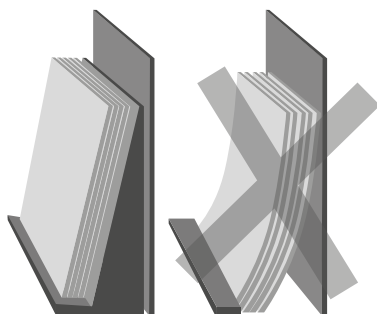
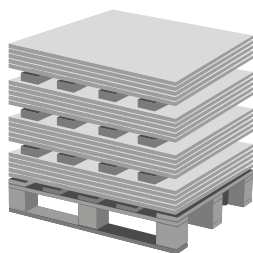
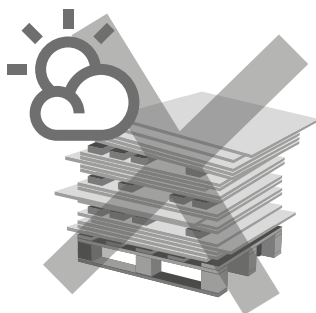
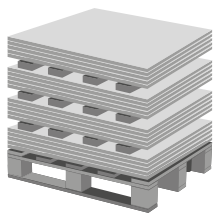
Property	SYNCRON	Standard
 Stain Resistance	Grade 5	EN 14323: 17
 Resistance to Cold Liquids	Grade 5	EN 12720:09
 Crack Resistance	Grade 5	EN 14323: 17
 Cold check (40 cycles : 1h 60 °C, 1h -20 °C and 15 min. at room temp.)	No effect	AIDIMME
 Color Fastness	Blue scale: >6 Grey scale: 5	EN 14323: 17
 Resistance to Dry Heat, 100 °C / 212 °F	Grade 5	EN 12722:09
 Resistance to Damp Heat, 85° C / 185 °F	Grade 5	EN 12721:09
 Scratch Resistance	18 ± 2 N	EN 15186-A
 Abrasion Resistance	Class 3A (PI: 208 cycles)	EN 14323: 17
 Resistance to Steam	Grade 5	EN 14323: 17
 Ball Drop	140 cm	EN 14323: 17
 Dimensional Tolerance (Finished Components)	± 0.5 mm	ALVIC
 Antibacterial Efficacy (24 hours)	100%	ASTM E2180:07 JIS Z2801:06
 Warp Tolerance	2 mm / 1 m	ALVIC

Evaluation of Surface Defects

Defects greater than 1 mm² that are visible under the following conditions will be considered unacceptable defects:

1. Observation distance: 70 cm (about 2 feet).
2. Observation position: vertical (typical use position).
3. Lighting conditions: diffused light from fluorescent lamps.
4. Observation time: 20 seconds maximum.

RECOMMENDATIONS



Storage

Please process panels expediently upon receipt and communicate any issues regarding them. Exposure of the product to sunlight (UV light) and other heat sources should be avoided. Product should be kept in a ventilated place. It is important to use a FIFO stock management system to avoid mixing products with very different production dates, which, together with the intrinsic evolution of the coatings, could cause visual differences between them.

Recommended ranges for environmental conditions of storage:

Temperature: 10 °C - 40 °C / 50 °F - 104 °F

Humidity: 30% - 70%

Stacking

The panels should not be placed directly on the ground. Wherever possible, the storage supports supplied with each package should be maintained and placed all in the same position to maintain a uniform height, to ensure flatness, and thusly, to prevent warping of the boards. For the length of 2750 mm (108 in), a minimum of 4 supports, evenly distributed, are recommended.

If several packages are stacked, (up to a recommended maximum of four) the supports of the different packages must be aligned vertically to transfer the weight to the lower levels without deforming the boards. To protect the surface of the boards, it is necessary to use lower and upper protection boards.

Vertical Storage

Although it should be avoided whenever possible, vertical storage can be accomplished with a reduced number of boards. To do this, racks with a support surface for the boards must be used to prevent them from warping, and with a minimum incline of 10°.

Handling & Transportation

When manually handling the panels, the use of protective gloves and safety shoes is mandatory to avoid injuries. During panel machining, appropriate aspiration systems and, if necessary, protective masks must be used to prevent aspiration of the dust generated by the panel.

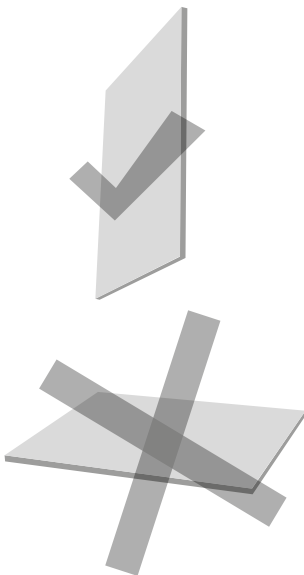
The boards should not be dragged over any surface that could cause deterioration of any of the face or back.

RECOMMENDATIONS



Cleaning

For cleaning, it is recommended to use a non-abrasive cloth, moistened with soap and water, and dry immediately afterwards. In no case should aggressive chemicals such as solvents, alcohol, ammonia, etc. be used.



Applications

The characteristics of the product enable it to be used in vertical applications. The information contained in this document does not exempt the buyer, transformer, assembler and/or user from their obligation to check the compatibility of the material with the intended use and assembly.



Amendments

This document may be edited at any time by the company without express commitment to send said updated edition to all initial recipients. To check that you have the latest edition available, it is advisable to contact ALVIC's customer service department.